

# MONTANA FY2024 LIHEAP PERFORMANCE MANAGEMENT SNAPSHOT

In FY2024, Montana furnished LIHEAP bill payment assistance to 14,999 households. They collected energy burden data for 11,430 households (76.2%).

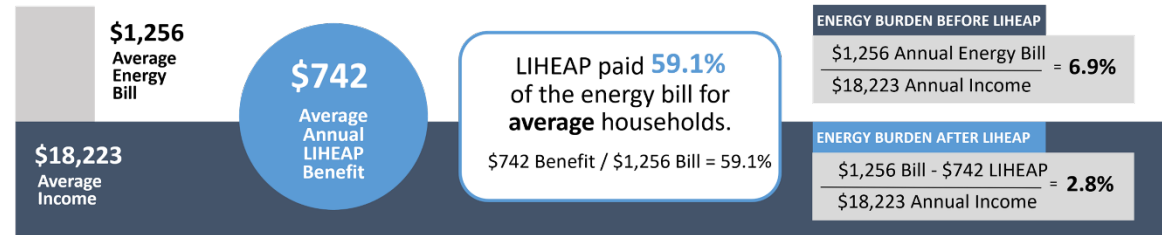
## Does LIHEAP furnish higher benefits to higher burden households?

**Yes.** In Montana, the total LIHEAP benefit received by high burden households in FY2024 was about **\$234 (31.5%) more** than the total LIHEAP benefit received by the average recipient household.

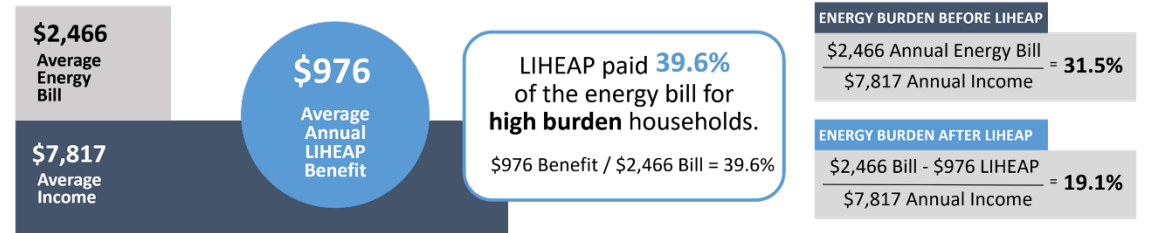
## Does LIHEAP pay a larger share of the home energy bill for high burden households?

**No.** In FY2024, LIHEAP paid **59.1%** of the energy bill for average households in Montana, while LIHEAP paid **39.6%** of the energy bill for high burden households.

### All Households



### High Burden Households



## Prevention and Restoration of Home Energy Service Loss

### As a Result of Bill Payment Assistance



### As a Result of Equipment Repair or Replacement



- In FY2024, LIHEAP benefits in Montana **prevented the loss of service 3,337 times**, by stopping threatened utility service disconnections and by delivering fuels to homes that were at risk of running out. In addition, the program **repaired or replaced heating or cooling equipment at imminent risk of failure 203 times**.
- In FY2024, LIHEAP benefits **restored home energy service 591 times** for households who had been disconnected by their utility provider or who had run out of fuel oil, propane, or wood. In addition, the program **restored home energy service 494 times by repairing or replacing inoperable heating or cooling equipment**.

\* High burden recipient households represent 25% of all recipient households with 12 months of bill data, based on having the highest energy burden. Data are current as of May 31, 2025.